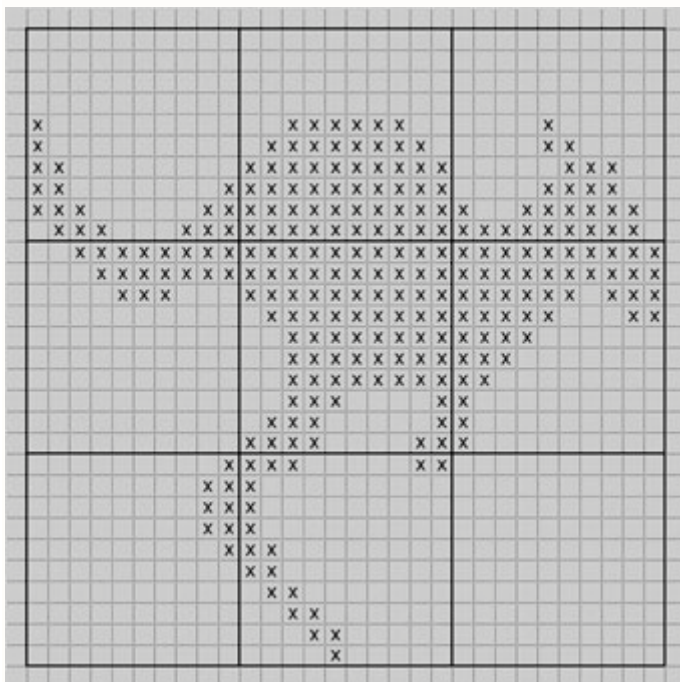


**WRAP WITH LOVE -INSTRUCTIONS FOR KNITTING KANGAROO SQUARES**



**KANGAROO SQUARE - FINISHED SQUARE 10 INCHES X 10 INCHES**

Working with 8-Ply wool (two colour contrast)

Cast on 56 stitches and knit 24 rows of garter stitch.

1st row, knit, then next row knit 12, purl 32, knit 12.

Repeat these last two rows three times (8 rows in all).

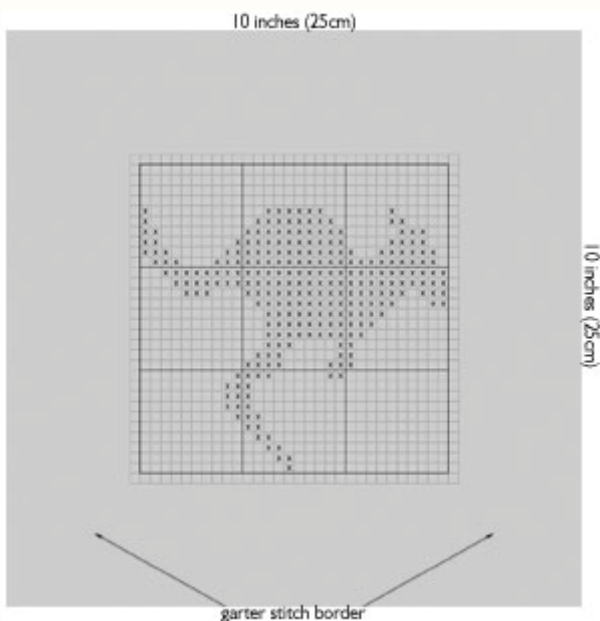
Begin the Kangaroo graph (30 stitches) within the 32 stitches of stocking stitch.

After the Kangaroo is completed, work another 8 rows of stocking stitch within the border of 12 stitches of garter stitch on either side.

Knit top border with 24 rows of garter stitch.

**PLEASE USE ONE 10in X 10in (25cm X 25cm) KANGAROO SQUARE PER WRAP**

Place in any position.



Finished Kangaroo square in garter stitch border.